

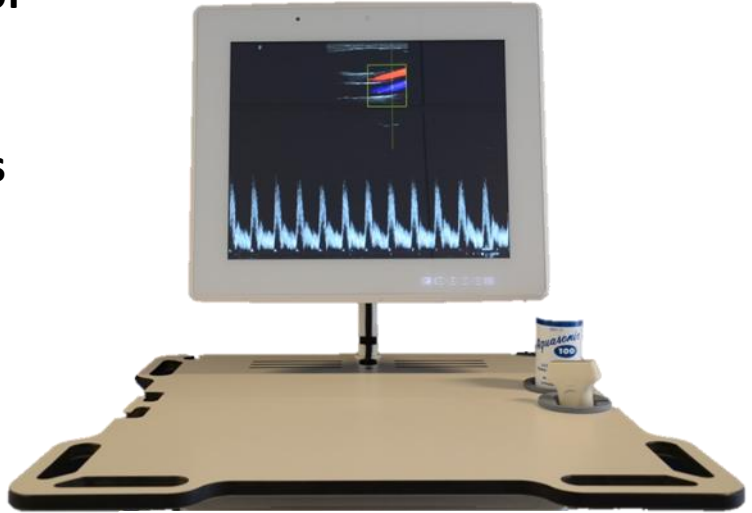
Roll Touch



dDopp

**Private practice & Point of
care
Color Doppler
For General Applications**

Fast - Easy - Complete



Affordable High Quality Imaging for Diagnostics

Vascular, Abdo., MSK, OB/GYN, Urology, Endocrinology,....

dDopp provides you a comprehensive diagnostic ultrasound at the point of care for a broad spectrum of applications.

Immediate images for analysis to ensure fast and accurate diagnosis.

Sharing, recording, sending, reviewing, DICOM file push ...

The best cost/benefit ratio for your day-to-day practice.

dDopp is specially designed for mobility without sacrificing performance.

Quick process with your presets, labels and diagnostic template. Calculation module, filters included.

In the hospital, at the office, EMR & Dicom compatible.

Adjustable and comfortable working height.

A STEP AHEAD!

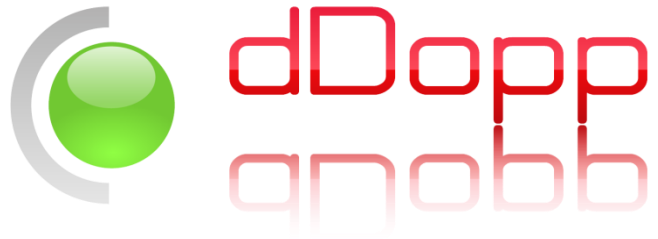


Non contractual document. Specifications may change without prior notice.



Brochure Roll Key EN V1

Main Specifications



Imaging Modes:

- B B+M
- B+B M
- 4B
- Color Doppler (CFM)
- Power Doppler (PDI)
- Directional Power Doppler (DPDI)
- Pulsed Wave Doppler (PWD)
- B+PWD (Duplex)
- B+CFM/PDI/DPDI+PWD (Triplex)



Scanning Method:

- Electronic linear
- Electronic convex
- Electronic microconvex
- Scanning depth: 2-30 cm



Calculation packages:

- Vascular
- Urology
- Endocrinology
- Obstetrics
- Cardiology
- Gynecology

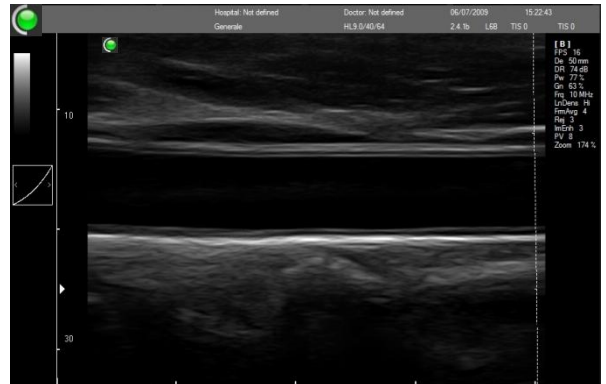


DICOM:

- Verification SCU
- Modality Worklist (MWL) SCU
- Modality Performed Procedure Step (MPPS) SCU
- Store SCU (images, cines)
- Print SCU (grayscale, color)

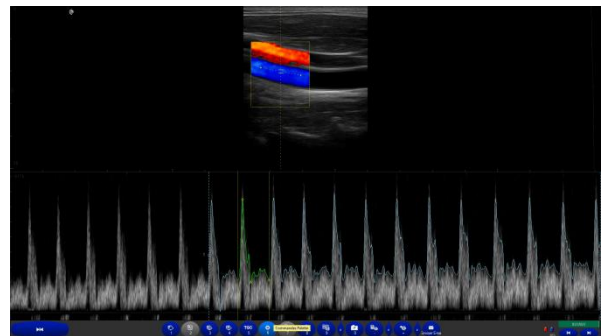
Other image & video formats:

- AVI, JPG, BMP, PNG, TIF,
- DCM (DICOM-JPEG RGB/YBR)
- DCM (DICOM-JPEG RGB/YBR Video)



Dimensions:

- Weight : 28 kg
- Adjustable height: from 82 to 120 Cm



Power Supply:

- 100-240 V 50-60 Hz

